

## **STORYBUILDER EXPERT MODE QUICK START: VIEWING ACCIDENT DATA**

24 August 2011

[www.storybuilder.eu](http://www.storybuilder.eu)

help@storybuilder.eu

© Kingdom of the Netherlands 2004-2011

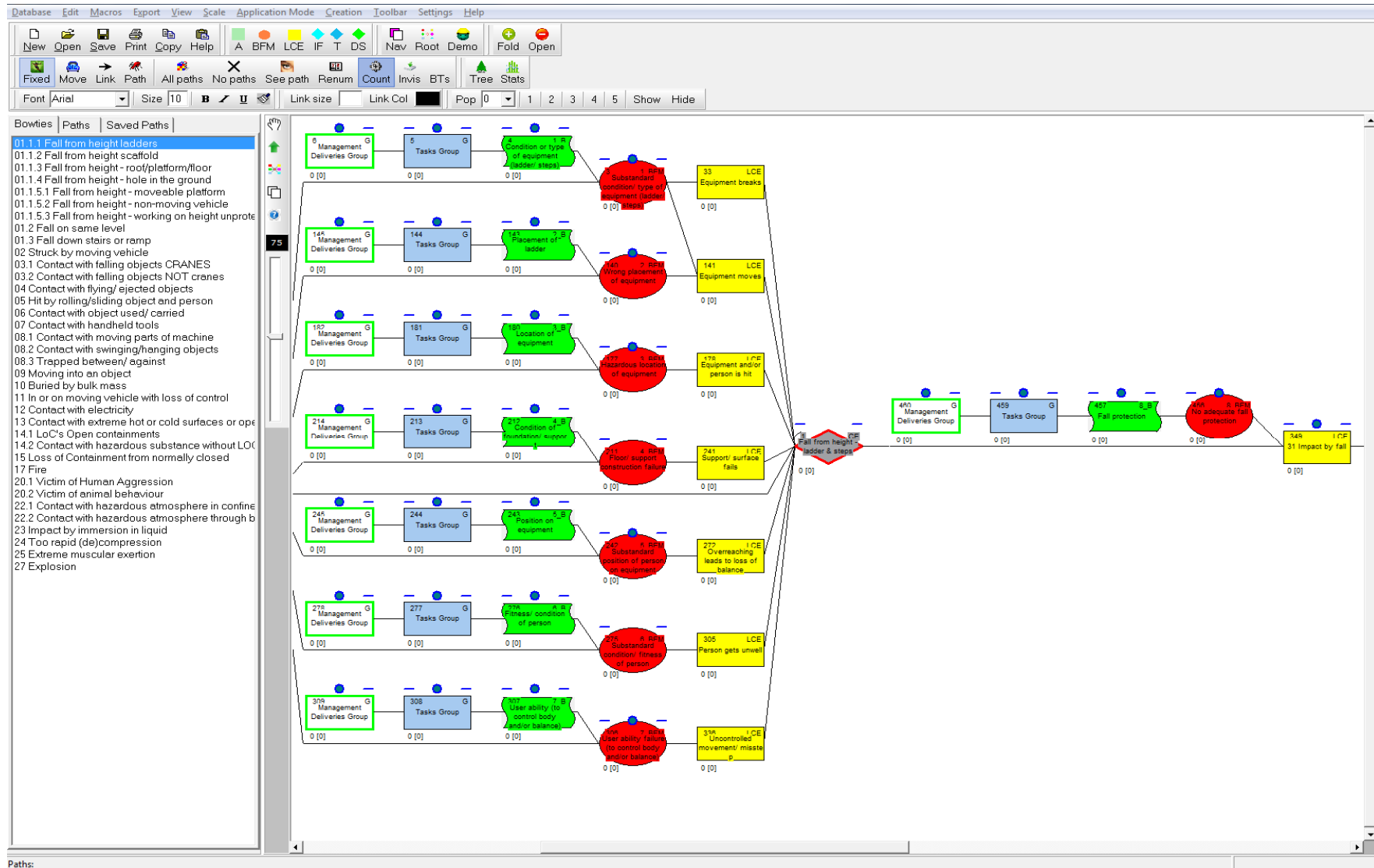
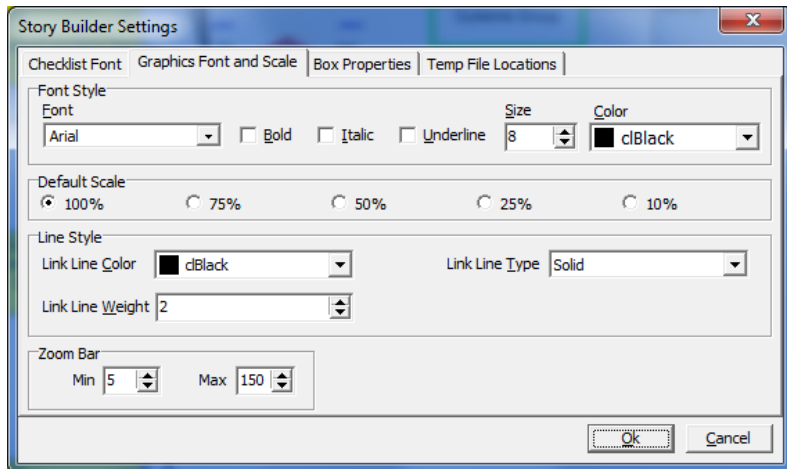
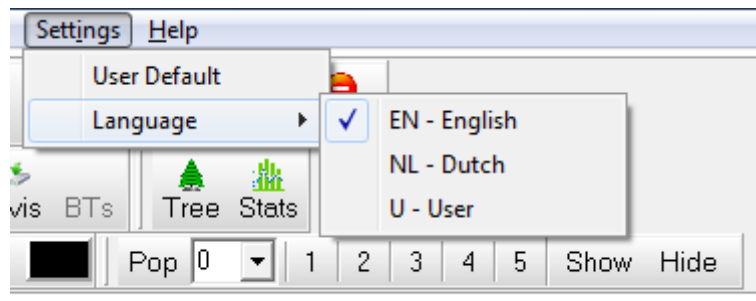


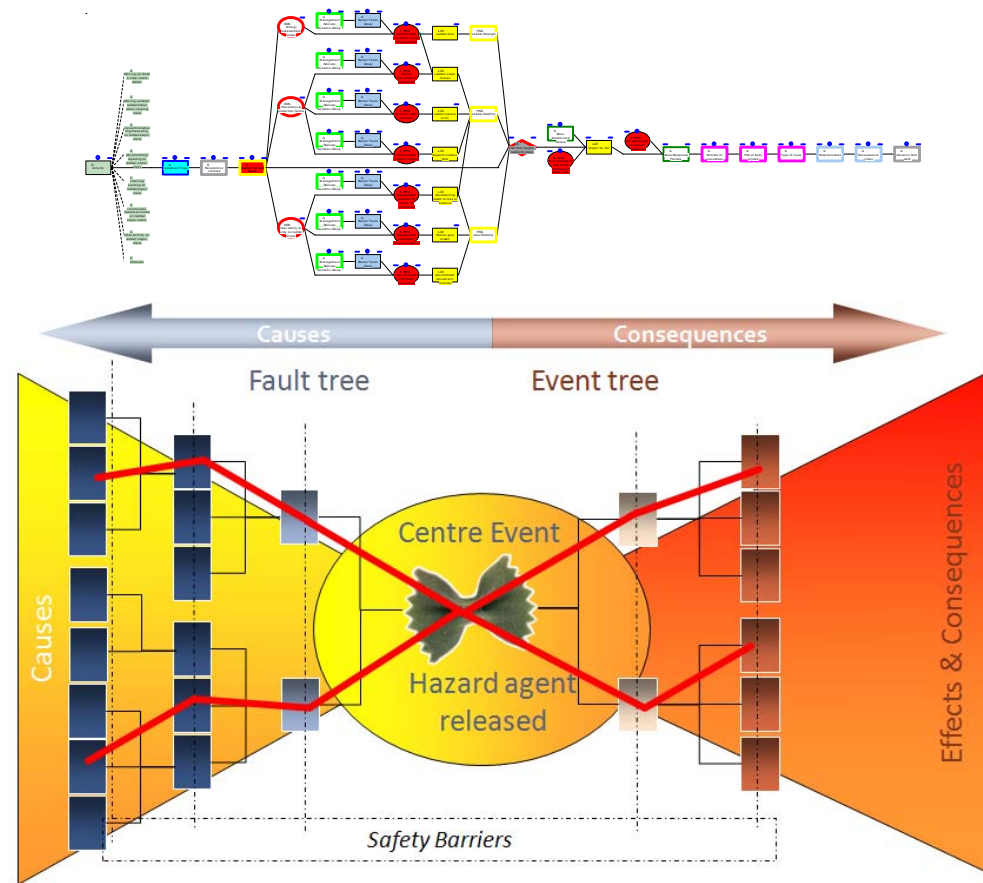
Figure 1 When you open the data file you see the first storybuild at a scale given by the central zoom slider bar.



Click dropdown menu Settings and click on user default. You get 4 tabs where you can personalise your settings. This Checklist Font setting affects what you see in the Lite Checklists.



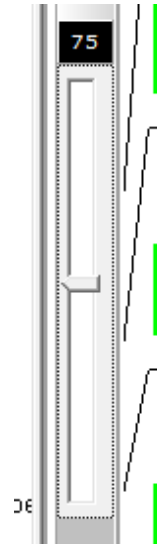
**Figure 2** Select the language of the database (default is English). The settings menu is also available in Lite mode



**Figure 3** Each storybuild is in the form of a bowtie with causes on the left and consequences on the right of the centre event

Bowties	Paths	Saved Paths
01.1.1	Fall from height ladders	
01.1.2	Fall from height scaffold	
01.1.3	Fall from height - roof/platform/floor	
01.1.4	Fall from height - hole in the ground	
01.1.5.1	Fall from height - moveable platform	
01.1.5.2	Fall from height - non-moving vehicle	
01.1.5.3	Fall from height - working on height unprote	
01.2	Fall on same level	
01.3	Fall down stairs or ramp	
02	Struck by moving vehicle	
03.1	Contact with falling objects CRANES	
03.2	Contact with falling objects NOT cranes	
04	Contact with flying/ ejected objects	
05	Hit by rolling/sliding object and person	
06	Contact with object used/ carried	
07	Contact with handheld tools	
08.1	Contact with moving parts of machine	
08.2	Contact with swinging/hanging objects	
08.3	Trapped between/ against	
09	Moving into an object	
10	Buried by bulk mass	
11	In or on moving vehicle with loss of control	
12	Contact with electricity	
13	Contact with extreme hot or cold surfaces or ope	
14.1	LoC's Open containments	
14.2	Contact with hazardous substance without LOC	
15	Loss of Containment from normally closed	
17	Fire	
20.1	Victim of Human Aggression	
20.2	Victim of animal behaviour	
22.1	Contact with hazardous atmosphere in confine	
22.2	Contact with hazardous atmosphere through b	
23	Impact by immersion in liquid	
24	Too rapid (de)compression	
25	Extreme muscular exertion	
27	Explosion	

**Figure 4 Select the bowtie you want by clicking on its name and it will load**



**Figure 5** To make the storybuild bigger or smaller go to the zoom slider in the vertical menu bar



**Figure 6** To see the total path count select the All paths button and to deselect select No paths

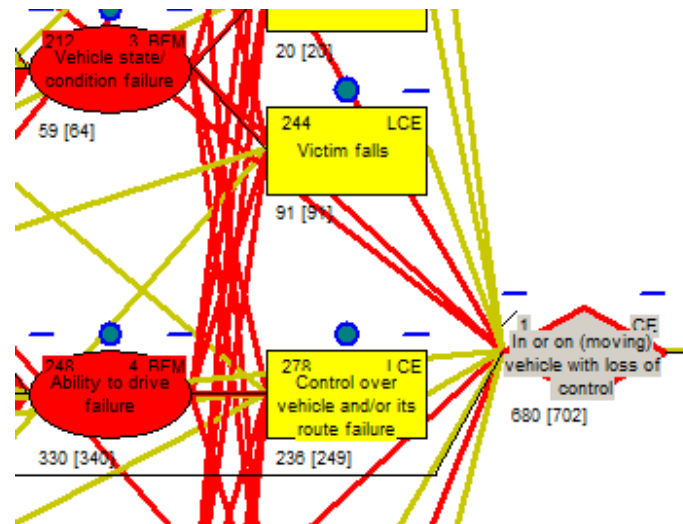
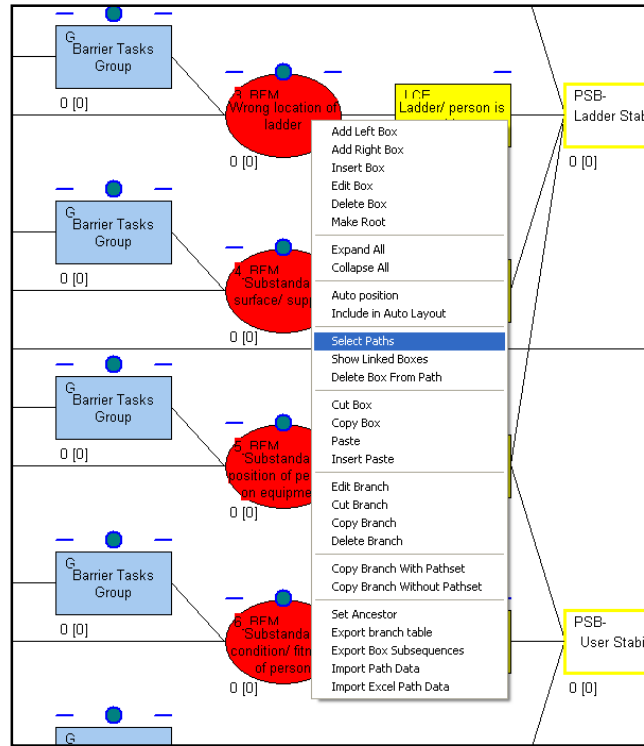
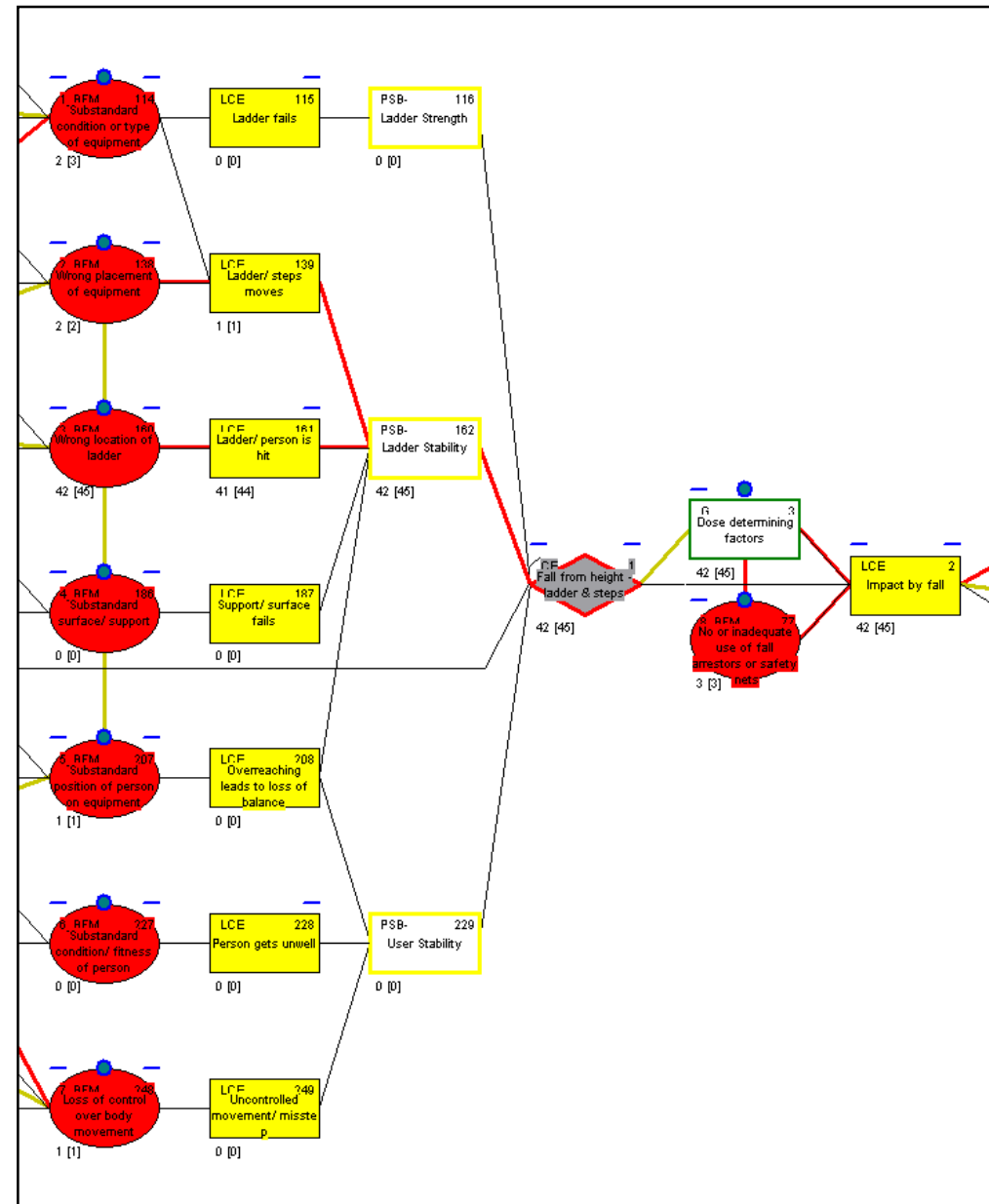
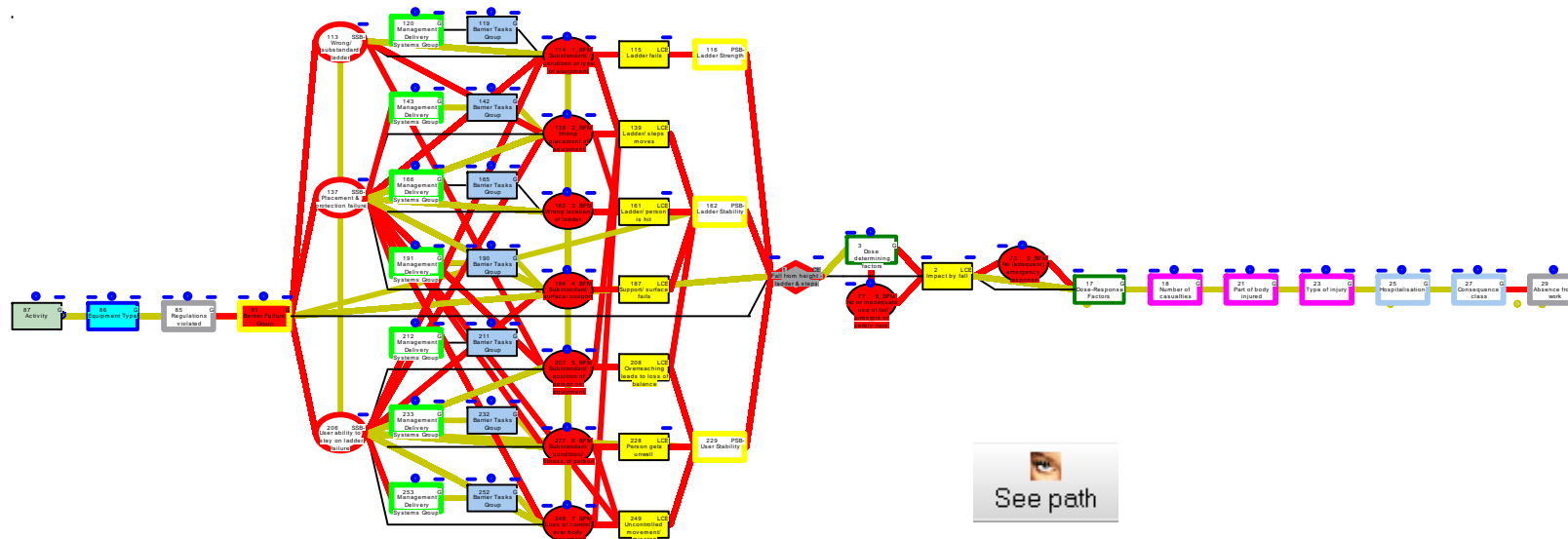


Figure 7 The number of accident paths going through a box are shown below [with number of victims shown in parenthesis].



**Figure 8** If you right click on a box and choose “Select paths” you only get the paths going through that event box. In the example “Wrong Location of Ladder” was chosen. This has 42 paths going through it [and 45 victims]. The advantage of making a reduced selection is that you can then see what other event boxes the accident paths go through. The centre event is now showing only 42 paths (you will see these highlighted in the paths list)





**Figure 9** Notice that some paths are red and some are green. A green path means there are hidden boxes. You need to click the button "See path" to see all the paths. If after the first click there are still green paths click on See Path again. You will then see all the box events the selected paths go through.

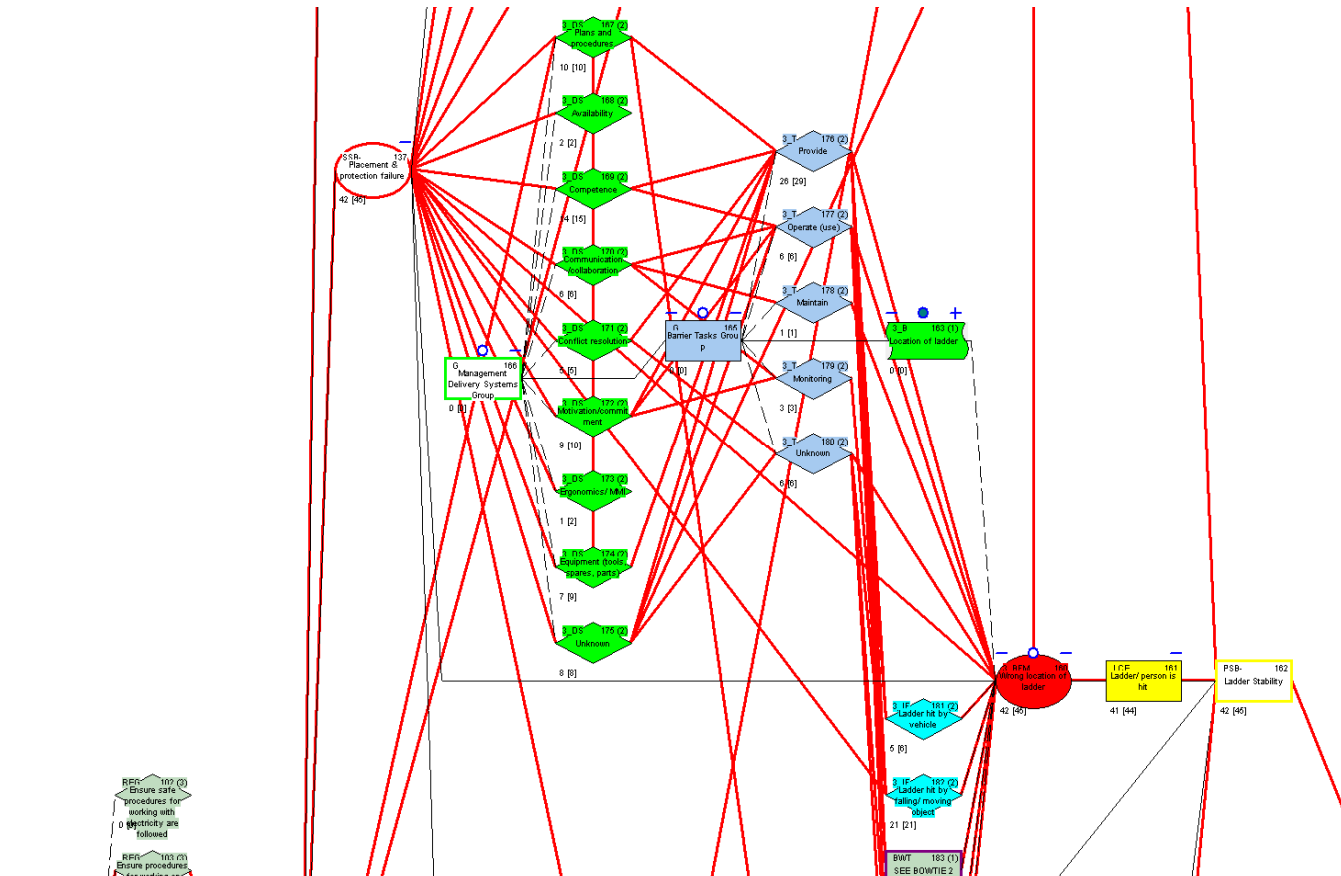


Figure 10 Paths made visible showing the connections of a barrier failure (red box)

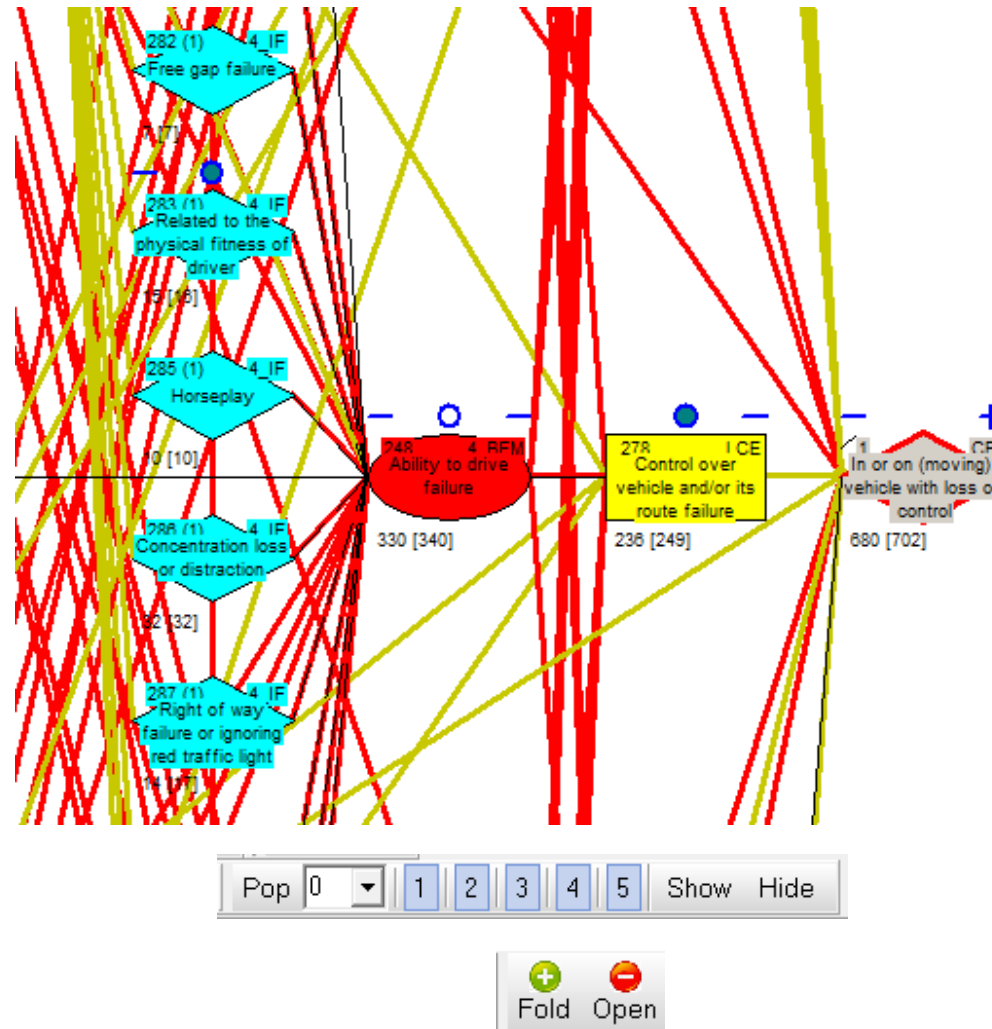


Figure 11 Use the pop-up buttons to open and close different parts of the structure. “Show” opens all the pop-ups; pop-ups are indicated by full (popped away) and empty blue circles. Fold and open buttons fold away and open branches; open and folded are indicated by minus  $-$  (open) and plus  $+$  (folded) above boxes.

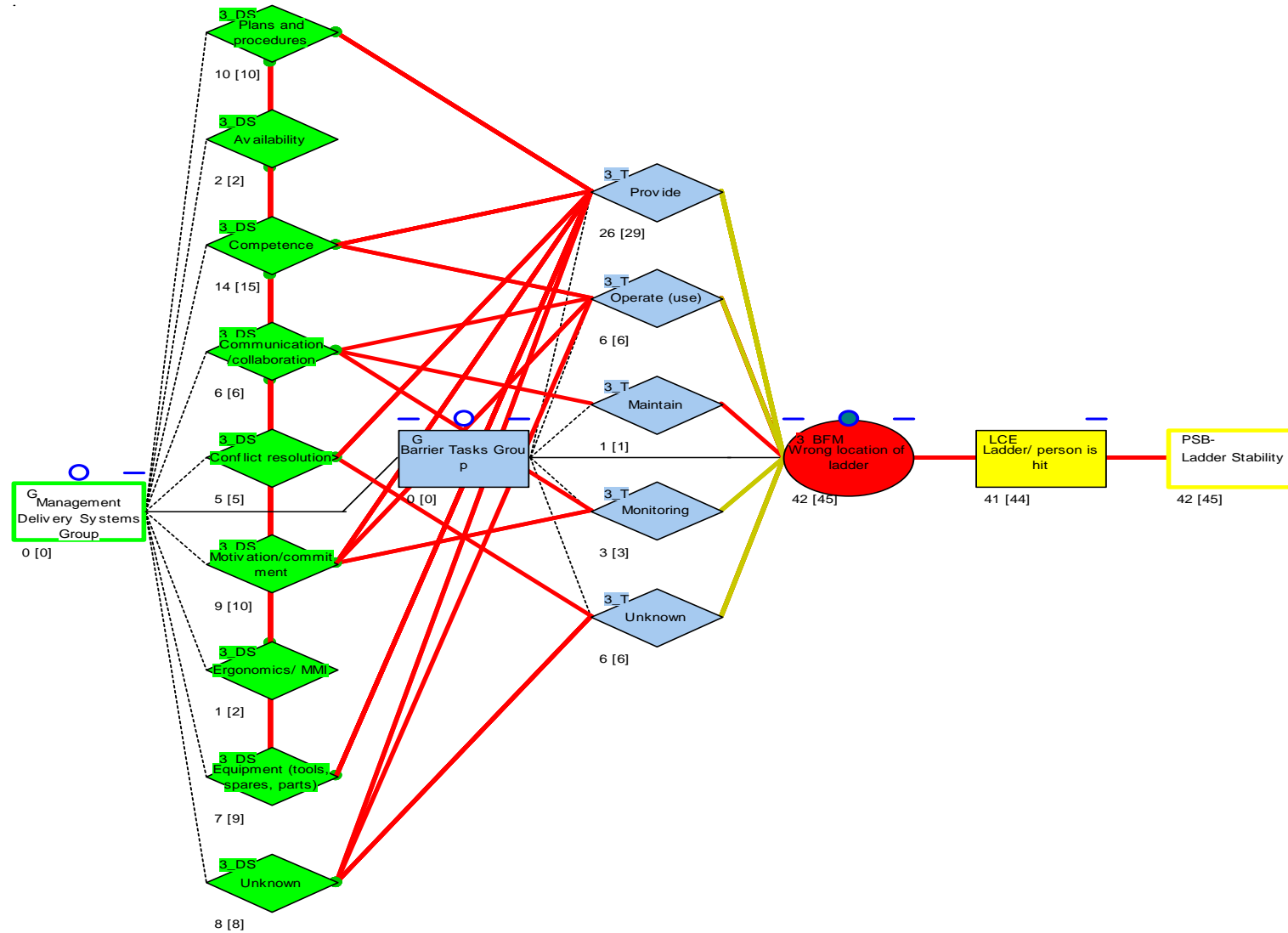


Figure 12 By unfolding the structure using “unfold” and “pop-ups” the basis structure of a barrier (red box) connected to preceding and subsequent events can be seen (see Figure 13)

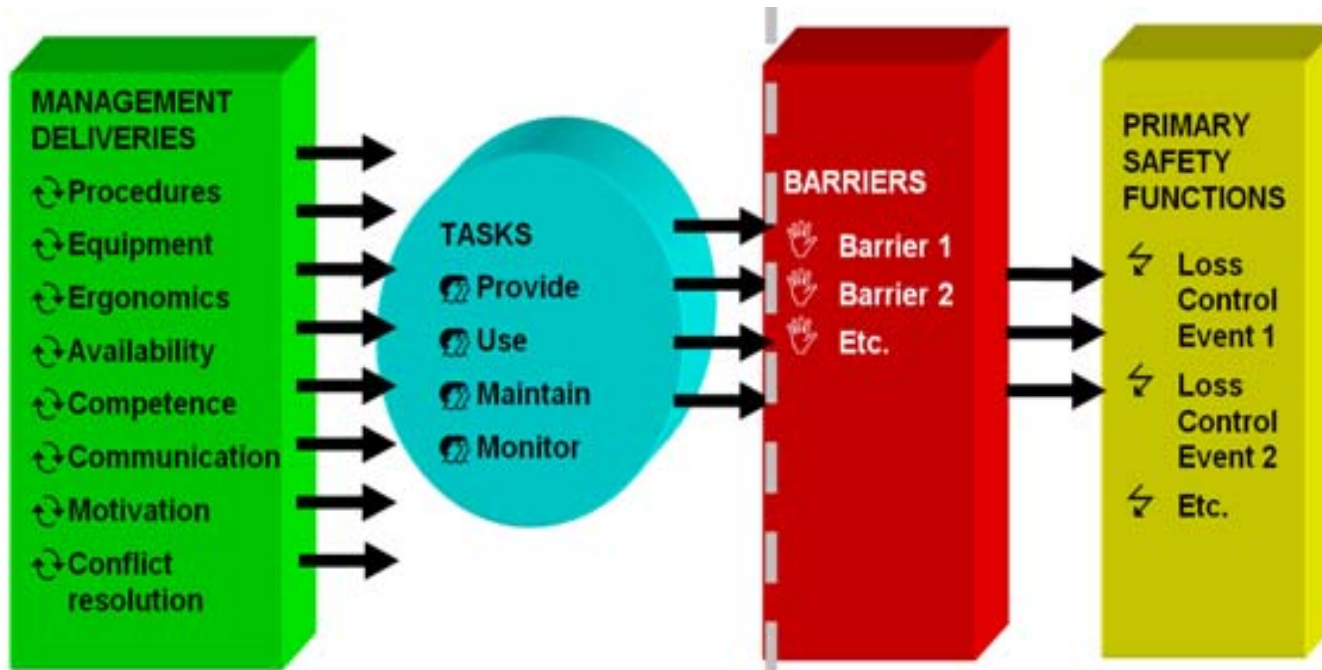
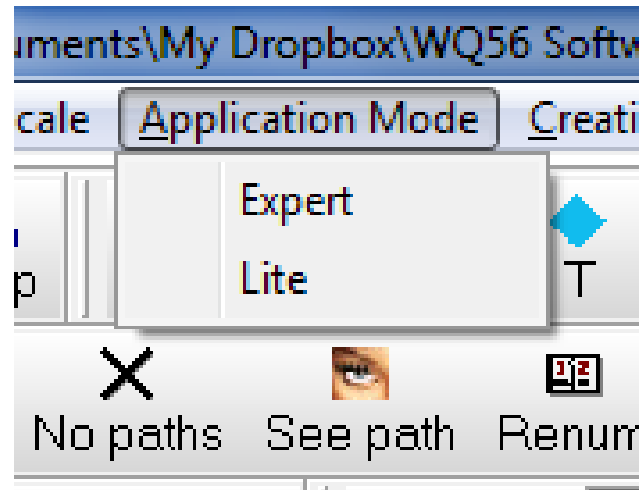


Figure 13 Basic barrier (failure) connections



*Figure 14 If you want to switch to Lite mode (or vice versa) use the application mode drop down*